

# CROWN SQUARE

## 2607-09 N 14th Street

2,410sf + Partial Basement

\$8.00/sf

Annual Base Rent \$19,280

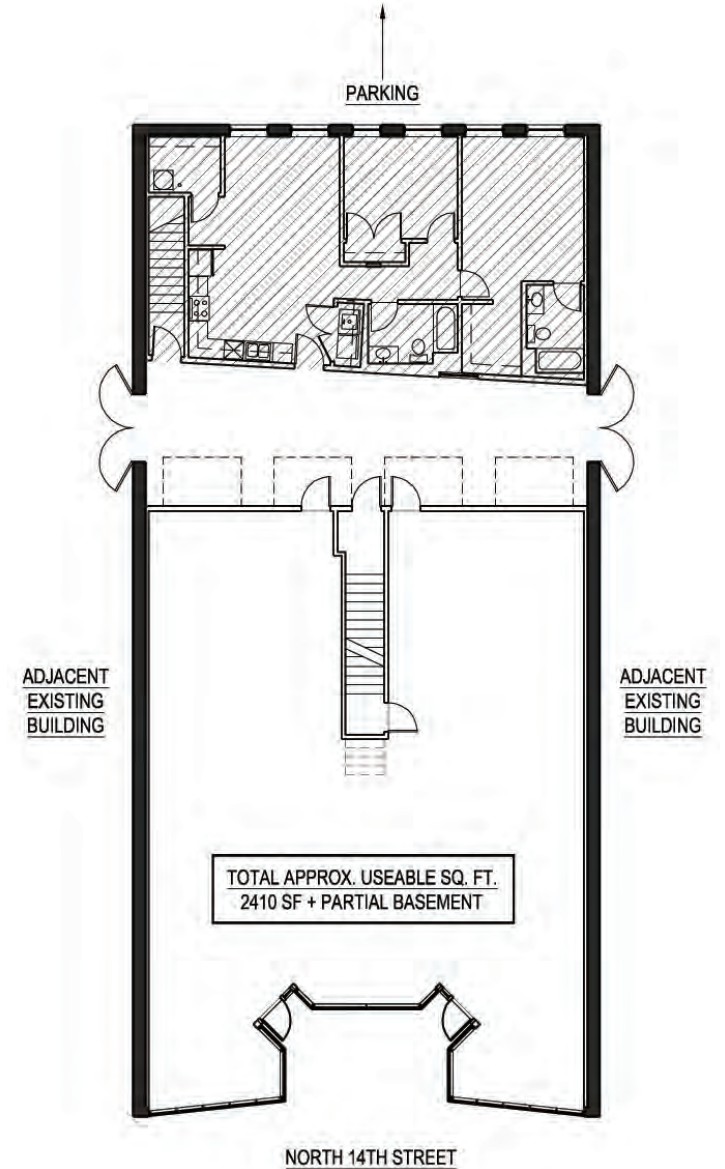
Monthly Base rent \$1,607

Build out allowance \$8.00/sf

The square footages on these exhibits are approximations. Final and exact square footages will be calculated upon the completion of construction.

Basement space for commercial tenant storage will be available anywhere "partial basement" is listed on the floor plan exhibits. Final amounts of available basement storage space will be calculated upon the completion of construction.

All elevations are a stylistic representation of the soon to be completed product. Final treatments of primary elevations are subject to design approvals associated with historic rehabilitation guidelines."



314 | 771 | 5335  
[www.dnrealty.com](http://www.dnrealty.com)