

CROWN SQUARE

2611 N 14th Street

1,180sf
\$8.00/sf
Annual Base Rent \$9,440
Monthly Base rent \$787
Build out allowance \$8.00/sf

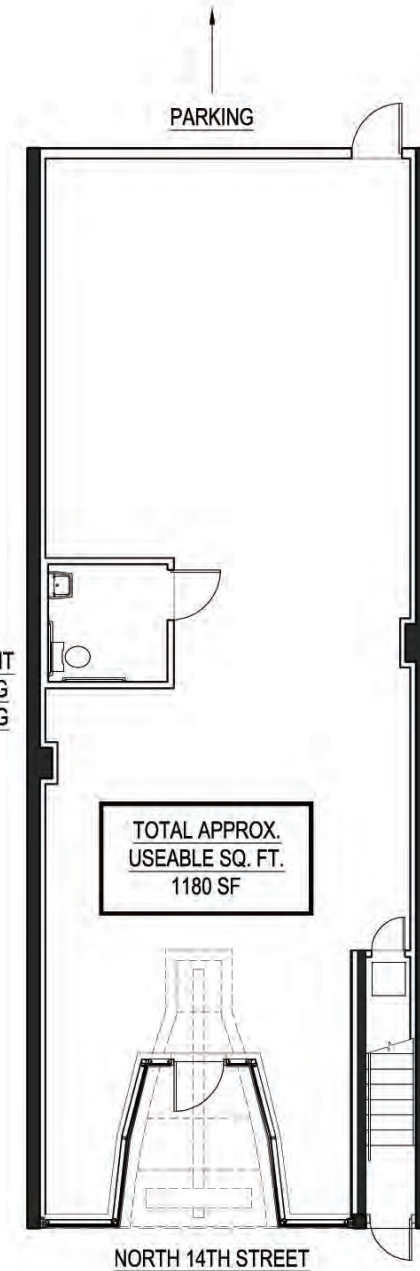
The square footages on these exhibits are approximations. Final and exact square footages will be calculated upon the completion of construction.

Basement space for commercial tenant storage will be available anywhere "partial basement" is listed on the floor plan exhibits. Final amounts of available basement storage space will be calculated upon the completion of construction.

All elevations are a stylistic representation of the soon to be completed product. Final treatments of primary elevations are subject to design approvals associated with historic rehabilitation guidelines."



ADJACENT
EXISTING
BUILDING



TOTAL APPROX.
USEABLE SQ. FT.
1180 SF

NORTH 14TH STREET



314 | 771 | 5335
www.dnrealty.com