

FOR LEASE

Ford Motor Building Office / Retail Historic Development Locust Business District



Historic renovation

Custom design interiors

Move in and join other creative and professional firms

Adjacent to Saint Louis University & Grand Center

**3001 Locust - Unit 3
St. Louis, MO 63103**

- Retail/Restaurant space
- 1,860 sq. ft. - corner storefront
- 14' ceiling
- 2-stall handicapped accessible restroom
- Elevator served
- Brick/concrete building
- Tax abated
- Build out design & allowance negotiable

For Lease: \$12.50 per sq. ft. (\$1,937 per month) NNN
Approximately \$1.70 per sq. ft. for NNN Fees



**DUFFE
NUERNBERGER
REALTY**

1425 South 18th Street
St. Louis, Missouri 63104
(314) 771-5335

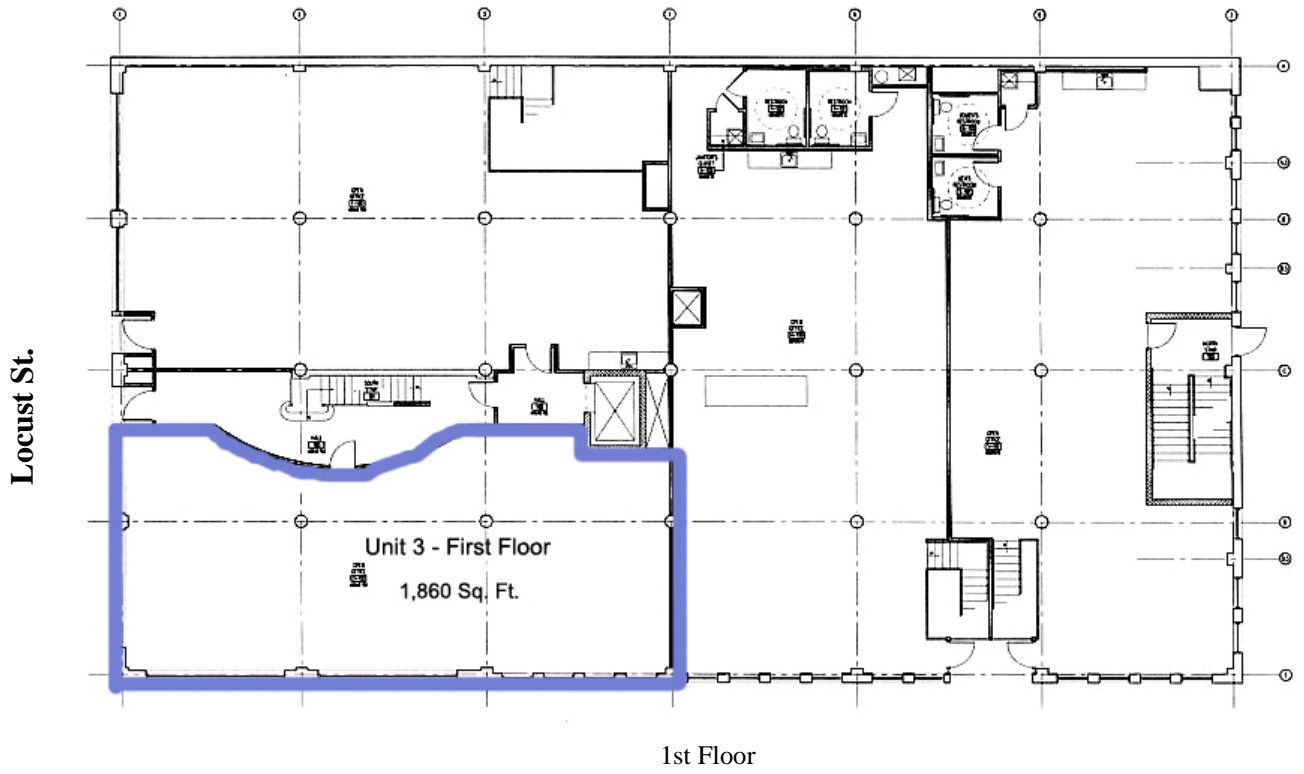
CONTACT:

Jassen Johnson
(314) 614-6181
jassen@rdallc.net

Flyer on the web at: www.dnrealty.com

Neighborhood information at www.lbd-stl.com

3001 Locust - Unit 3 Floor Plan



Garrison Ave.