

FOR LEASE



Toky Building 7,700 Sq. Ft. Office/Retail Building



3139-41 Olive Street, St. Louis, MO 63103

- * Renovated building
- * Can be subdivided (3,000 sq. ft. & 4700 sq. ft.)
- * Open floor plan
- * Two conference rooms & two kitchenette areas
- * Skylights
- * Huge 2nd floor balcony
- * Exposed brick walls
- * Exposed, sealed concrete floors
- * Building is tax abated
- * Great location on Olive
- * Close to SLU, Harris Stowe, AG Edwards, Sigma Chemical and Grand Center

For Lease: \$12.00 per sq. ft. - NNN approx. \$1 per sq. ft.



**DUFFE
NUERNBERGER
REALTY**

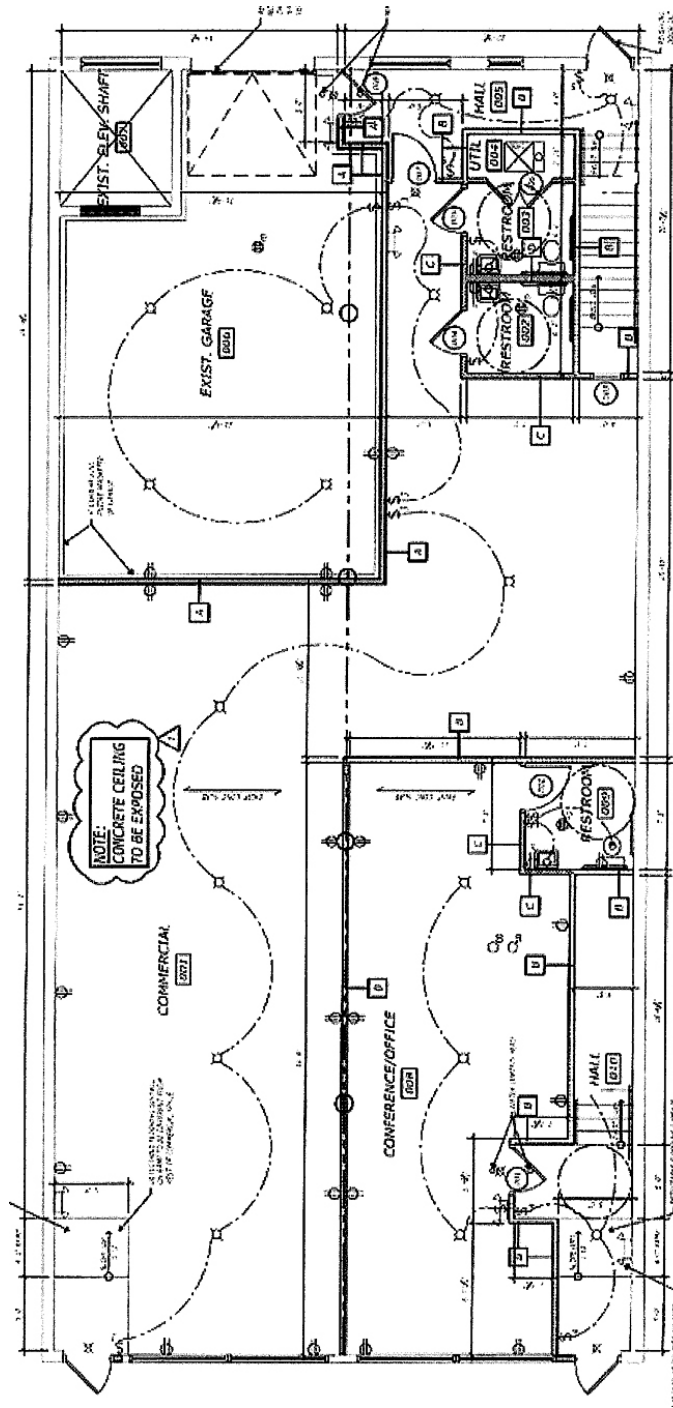
1425 South 18th Street
St. Louis, Missouri 63104
(314) 771-5335

CONTACT:
Jassen Johnson
(314) 614-6181
jassen@rdallc.net

Flyer on the web at: www.dnrealty.com

Neighborhood information at www.midtownalley.com

3139-41 Olive 1st Floor - Floor Plan



**DUFFE
NUERNBERGER
REALTY**

1425 South 18th Street
St. Louis, Missouri 63104
(314) 771-5335

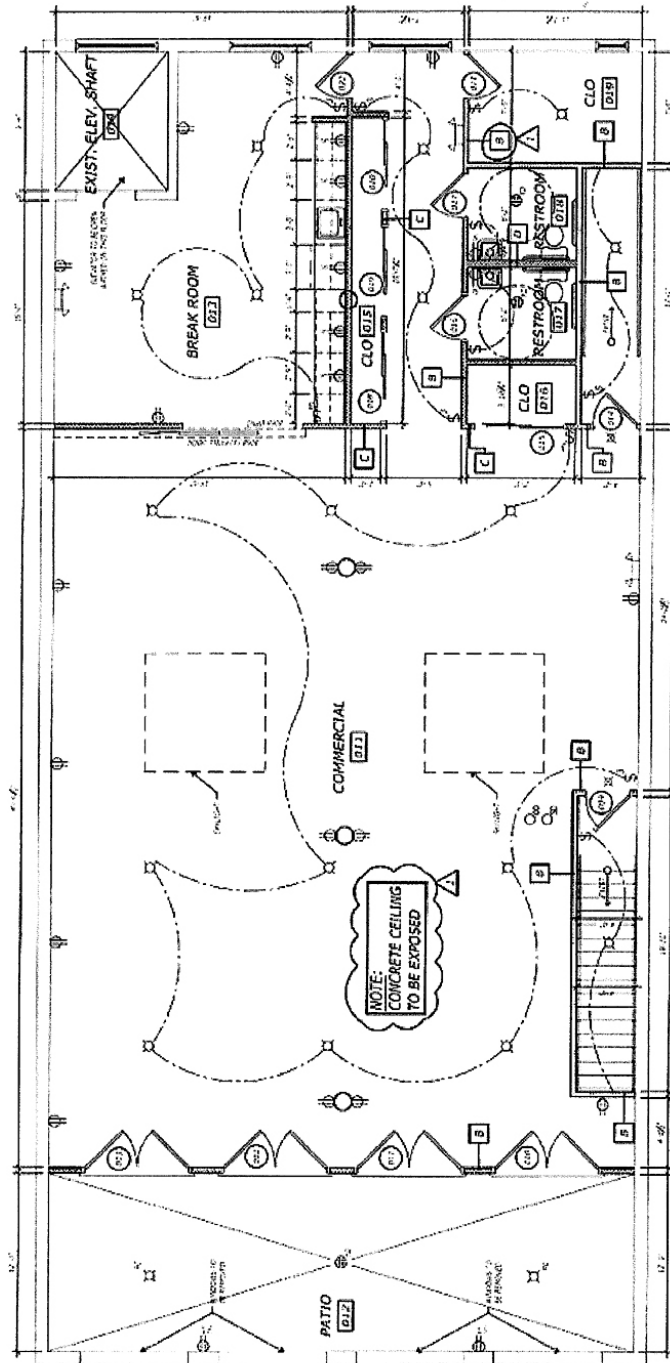
CONTACT:

Jassen Johnson
(314) 614-6181
jassen@rdallc.net

Flyer on the web at: www.dnrealty.com

Neighborhood information at www.midtownalley.com

3139-41 Olive 2nd Floor - Floor Plan



**DUFFE
NUERNBERGER
REALTY**

1425 South 18th Street
St. Louis, Missouri 63104
(314) 771-5335

CONTACT:

Jassen Johnson
(314) 614-6181
jassen@rdallc.net

Flyer on the web at: www.dnrealty.com

Neighborhood information at www.midtownalley.com