

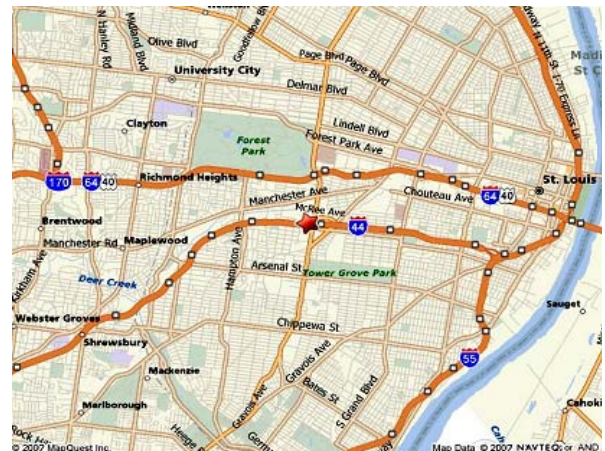
# FOR LEASE

## Hill Business Park I Office Warehouse Space for Lease



**5027 & 5033 Northrup, St. Louis, MO 63110**

- ◆ Located in landscaped office warehouse park
- ◆ Excellent business & nonprofit environment
- ◆ Located just off I-44 just south of I-64
- ◆ Two former children's services centers
- ◆ Built out facility for children
- ◆ Space divisible
- ◆ 1.6 miles from Barnes-Jewish Hospital



### For Lease:

**5027 Northrup - 3,275 sf office/nonprofit space \$7.50 per sq. ft. NNN**

**5033 Northrup 1st floor - 3,953 sf office/nonprofit space \$7.50 per sq. ft. NNN**

**5033 Northrup 2nd floor - 3,952 sf office/nonprofit space \$7.50 per sq. ft. NNN**



**DUFFE  
NUERNBERGER  
REALTY**

1425 South 18th Street  
St. Louis, Missouri 63104  
(314) 771-5335

### CONTACT:

**Michele Duffe**  
314-571-7646

[dnrealty@ndconsulting.com](mailto:dnrealty@ndconsulting.com)

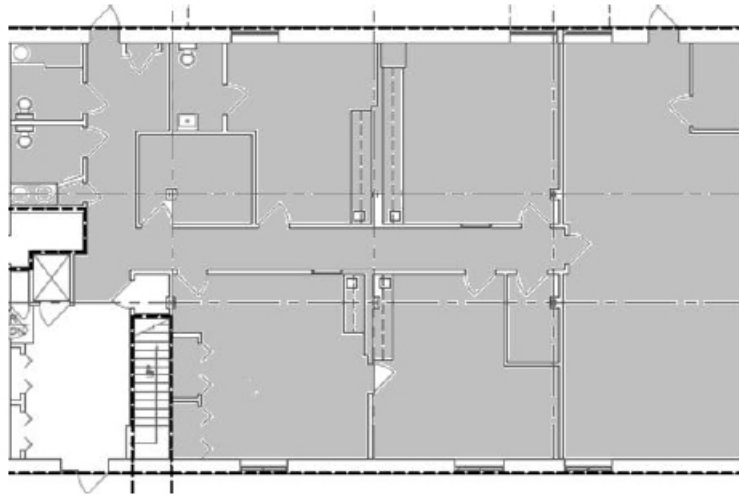
**Joe Carpenter**  
314-862-6117

[jcarpenter@ndconsulting.com](mailto:jcarpenter@ndconsulting.com)

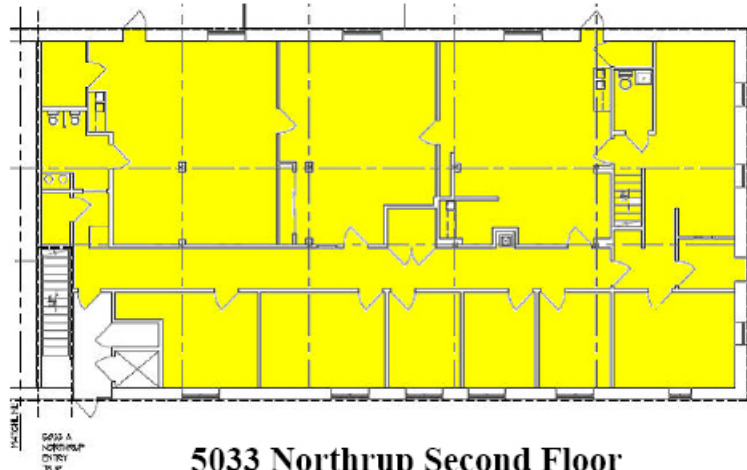
Flyer on the web at: [www.dnrealty.com](http://www.dnrealty.com)

# 5027 & 5033 Northrup, St. Louis, MO 63110

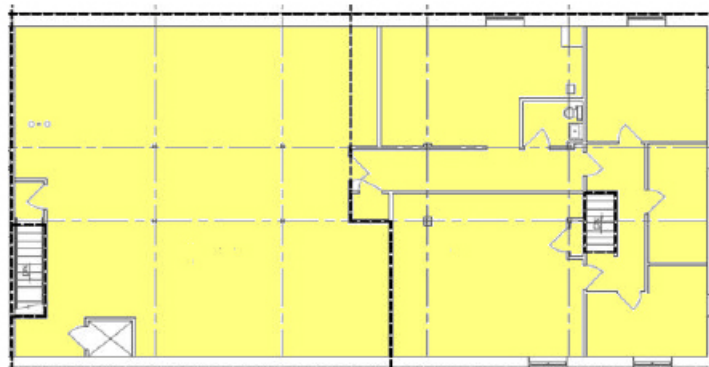
## 5027 Northrup



## 5033 Northrup First Floor



## 5033 Northrup Second Floor



**DUFFE  
NUERNBERGER  
REALTY**

1425 South 18th Street  
St. Louis, Missouri 63104

### **CONTACT:**

**Michele Duffe**

**314-571-7646**

[dnrealty@ndconsulting.com](mailto:dnrealty@ndconsulting.com)

**Joe Carpenter**

**314-862-6117**

[jcarpenter@ndconsulting.com](mailto:jcarpenter@ndconsulting.com)

Flyer on the web at: [www.dnrealty.com](http://www.dnrealty.com)