

FOR LEASE



Restaurant Space Midtown Alley



511 Theresa, St. Louis, MO 63103

- 4,429 sq. ft. restaurant space
- Mixed use development
- Common multi-stall restrooms
- Below 33 unit residential development
- Adjacent to Triumph & Moto Museum
- Grand Center - walk to Fox, Powel Symphony Hall, Contemporary Museum
- State of the art technology
- Surrounded by SLU Arena Parking

For Lease: \$16.00 per square foot NNN



**DUFFE
NUERNBERGER
REALTY**

1425 South 18th Street
St. Louis, Missouri 63104
(314) 771-5335

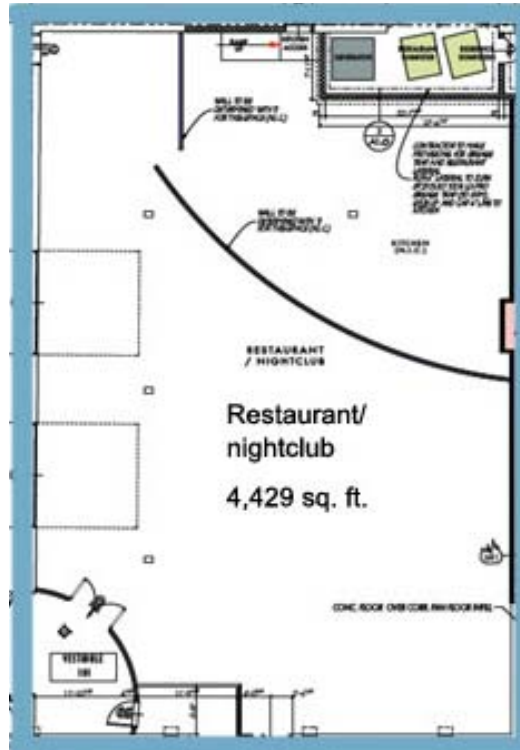
CONTACT:

Jassen Johnson
(314) 614-6181
jassen@rdallc.net

Flyer on the web at: www.dnrealty.com

Neighborhood information at www.midtownalley.com

511 Theresa Floor Plan



**DUFFE
NUERNBERGER
REALTY**

1425 South 18th Street
St. Louis, Missouri 63104
(314) 771-5335

CONTACT:

Jassen Johnson
(314) 614-6181
jassen@rdallc.net

Flyer on the web at: www.dnrealty.com

Neighborhood information at www.midtownalley.com